

Courtesy Of Kerry R Pfanmuller Of Century 21 Leading

\$178,649 - 410 10118 106 Avenue, Edmonton

MLS® #E4396927

\$178,649

2 Bedroom, 2.00 Bathroom, 860 sqft
Condo / Townhouse on 0.00 Acres

Central Mcdougall, Edmonton, AB

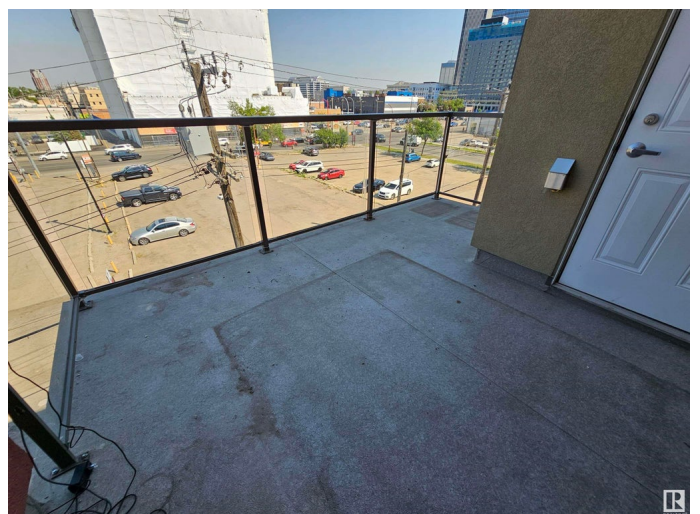
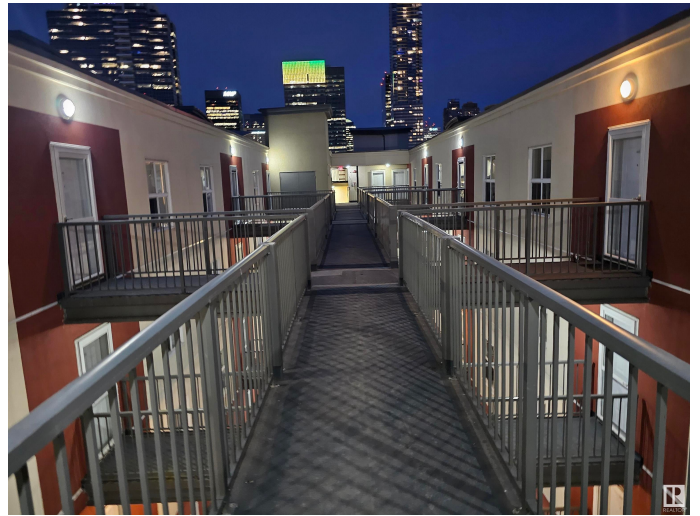
Luxurious 2-bed, 2-bath condo nestled in the heart of downtown, adjacent to Rogers Place arena. This urban oasis offers unparalleled convenience for avid concert-goers and hockey enthusiasts alike. Inside, the condo boasts a modern aesthetic, featuring new flooring, tile, and paint throughout. Seamlessly integrated smart technology and central AC enhances the living experience, while central air conditioning ensures comfort year-round. Large 2-storey windows flood the unit with natural light, creating a bright and inviting atmosphere. The kitchen offers a large island, stainless steel appliances & ample storage space. The primary bedroom impresses with a spacious walk-in closet & 3pc en suite bathroom. Additionally, you will find the second bedroom & 4pc bath, perfect for guests or family. A separate large storage room houses a new washer and dryer, providing convenience and functionality. Step onto the gorgeous balcony with downtown views, providing the perfect backdrop for relaxation or entertainment.

Built in 2007

Essential Information

MLS® # E4396927

Price \$178,649



Bedrooms	2
Bathrooms	2.00
Full Baths	2
Square Footage	860
Acres	0.00
Year Built	2007
Type	Condo / Townhouse
Sub-Type	Lowrise Apartment
Style	Single Level Apartment
Status	Active

Community Information

Address	410 10118 106 Avenue
Area	Edmonton
Subdivision	Central Mcdougall
City	Edmonton
County	ALBERTA
Province	AB
Postal Code	T5J 3S4

Amenities

Amenities	Detectors Smoke, Parking-Visitor, Sprinkler System-Fire, Storage-In-Suite
Parking Spaces	1
Parking	Heated, Underground

Interior

Interior Features	ensuite bathroom
Appliances	Dishwasher-Built-In, Refrigerator, Stacked Washer/Dryer, Stove-Electric
Heating	Forced Air-1, Natural Gas
# of Stories	4
Stories	1
Has Basement	Yes
Basement	None, No Basement

Exterior

Exterior	Wood, Stucco
Exterior Features	Back Lane, Flat Site, Golf Nearby, Low Maintenance Landscape, Picnic Area, Public Transportation, Schools, Shopping Nearby, View City, View

	Downtown
Roof	Asphalt Shingles
Construction	Wood, Stucco
Foundation	Concrete Perimeter

Additional Information

Date Listed	July 11th, 2024
Days on Market	246
Zoning	Zone 08
Condo Fee	\$552

DATA IS DEEMED RELIABLE BUT IS NOT GUARANTEED ACCURATE BY THE REALTORS® ASSOCIATION OF EDMONTON. COPYRIGHT 2025 BY THE REALTORS® ASSOCIATION OF EDMONTON. ALL RIGHTS RESERVED. Trademarks are owned or controlled by the Canadian Real Estate Association (CREA) and identify real estate professionals who are members of CREA (REALTOR®, REALTORS®) and/or the quality of services they provide (MLS®, Multiple Listing Service®)

Listing information last updated on March 14th, 2025 at 2:47pm MDT