

# \$375,000 - 9148 23 Avenue, Edmonton

MLS® #E4417081

**\$375,000**

0 Bedroom, 0.00 Bathroom,  
Office on 0.00 Acres

Parsons Industrial, Edmonton, AB

Approx 1,000 sq.ft. of office space FOR SALE in the highly visible Square on 23rd. 2nd floor space offers 4 private offices (3 with windows), reception area, board room (or 5th office - with a window ), kitchen area, and large storage room. Building offers a mix of retail and professional services. Ample parking, and signage available. Building also features an elevator and is handicap accessible. This would make a great space for professionals (medical, finance, law, etc) Great accessibility to major roadways such as the Whitemud and Anthony Henday.

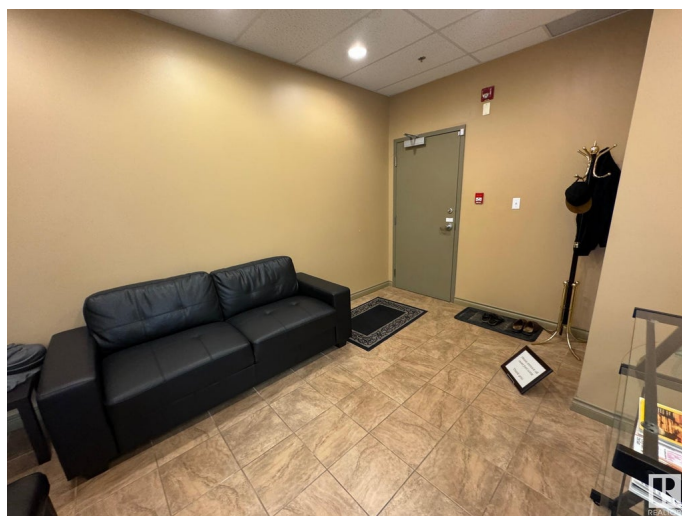
Built in 2008

## Essential Information

|            |           |
|------------|-----------|
| MLS® #     | E4417081  |
| Price      | \$375,000 |
| Bathrooms  | 0.00      |
| Acres      | 0.00      |
| Year Built | 2008      |
| Type       | Office    |
| Status     | Active    |

## Community Information

|             |                    |
|-------------|--------------------|
| Address     | 9148 23 Avenue     |
| Area        | Edmonton           |
| Subdivision | Parsons Industrial |



|             |          |
|-------------|----------|
| City        | Edmonton |
| County      | ALBERTA  |
| Province    | AB       |
| Postal Code | T6N 1H9  |

### **Exterior**

|              |            |
|--------------|------------|
| Exterior     | Wood Frame |
| Construction | Wood Frame |

### **Additional Information**

|                |                   |
|----------------|-------------------|
| Date Listed    | January 3rd, 2025 |
| Days on Market | 96                |
| Zoning         | Zone 41           |

DATA IS DEEMED RELIABLE BUT IS NOT GUARANTEED ACCURATE BY THE REALTORS® ASSOCIATION OF EDMONTON. COPYRIGHT 2025 BY THE REALTORS® ASSOCIATION OF EDMONTON. ALL RIGHTS RESERVED. Trademarks are owned or controlled by the Canadian Real Estate Association (CREA) and identify real estate professionals who are members of CREA (REALTOR®, REALTORS®) and/or the quality of services they provide (MLS®, Multiple Listing Service®)

Listing information last updated on April 9th, 2025 at 8:32am MDT