

\$114,900 - 16 10620 122 Street, Edmonton

MLS® #E4441461

\$114,900

2 Bedroom, 1.00 Bathroom, 744 sqft

Condo / Townhouse on 0.00 Acres

Westmount, Edmonton, AB

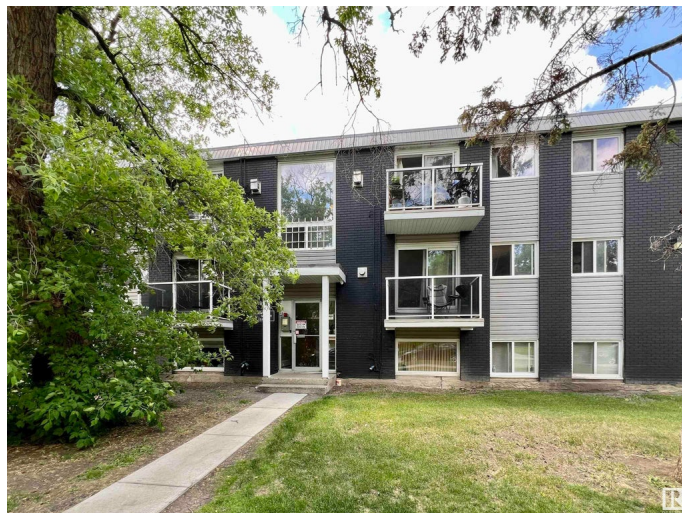
Freshly painted! Affordable and Convenient!
This 2 bed room unit is located at the corner of the building. With its brand new painting and lighting fixtures, it looks bright and clean. The condo is well managed with reasonable condo fee. The location is ideal--close to shopping, public transportation and all downtown amenities. Access to Grant MacEwan and NAIT within minutes. Perfect investment property or for first time buyer. Don't miss the opportunity to own this great property!

Built in 1969

Essential Information

MLS® #	E4441461
Price	\$114,900
Bedrooms	2
Bathrooms	1.00
Full Baths	1
Square Footage	744
Acres	0.00
Year Built	1969
Type	Condo / Townhouse
Sub-Type	Lowrise Apartment
Style	Single Level Apartment
Status	Active

Community Information



Address	16 10620 122 Street
Area	Edmonton
Subdivision	Westmount
City	Edmonton
County	ALBERTA
Province	AB
Postal Code	T5N 1M8

Amenities

Amenities	On Street Parking, Detectors Smoke
Parking	Stall

Interior

Appliances	Hood Fan, Refrigerator, Stove-Electric
Heating	Baseboard, Natural Gas
# of Stories	3
Stories	3
Has Basement	Yes
Basement	None, No Basement

Exterior

Exterior	Wood, Brick, Vinyl
Exterior Features	Back Lane, Playground Nearby, Public Transportation, Schools, Shopping Nearby, See Remarks
Roof	Asphalt Shingles
Construction	Wood, Brick, Vinyl
Foundation	Concrete Perimeter

Additional Information

Date Listed	June 10th, 2025
Days on Market	21
Zoning	Zone 07
Condo Fee	\$513

DATA IS DEEMED RELIABLE BUT IS NOT GUARANTEED ACCURATE BY THE REALTORS® ASSOCIATION OF EDMONTON. COPYRIGHT 2025 BY THE REALTORS® ASSOCIATION OF EDMONTON. ALL RIGHTS RESERVED. Trademarks are owned or controlled by the Canadian Real Estate Association (CREA) and identify real estate professionals who are members of CREA (REALTOR®, REALTORS®) and/or the quality of services they provide (MLS®, Multiple Listing Service®)

Listing information last updated on July 1st, 2025 at 1:47am MDT