

\$199,900 - 103 5 Aberdeen Way, Stony Plain

MLS® #E4458807

\$199,900

3 Bedroom, 1.50 Bathroom, 1,113 sqft

Condo / Townhouse on 0.00 Acres

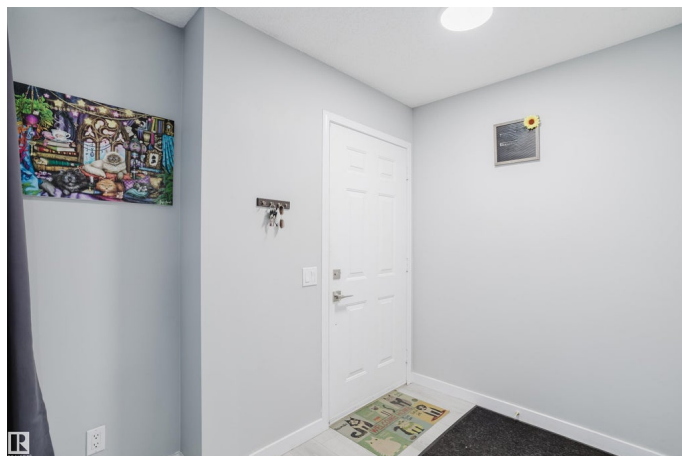
St. Andrews, Stony Plain, AB

Recently refreshed and move-in ready, this 2-storey townhouse in Stony Plain offers a clean, low-maintenance investment in a quiet, family-friendly community just 15 minutes from Spruce Grove. With updated vinyl plank flooring throughout, freshly painted cabinets in the kitchen and bathrooms, and modern paint tones, the unit feels bright and contemporary. The layout features three bedrooms, one-and-a-half baths, and a partially finished basement ready for your vision. This property is ideal for investors or buyers seeking a long-term rental hold in a growing community with great tenant appeal. Two assigned parking stalls included, and the location is close to schools, trails, parks, and shopping with easy commuter access.

Built in 1991

Essential Information

MLS® #	E4458807
Price	\$199,900
Bedrooms	3
Bathrooms	1.50
Full Baths	1
Half Baths	1
Square Footage	1,113
Acres	0.00



Year Built	1991
Type	Condo / Townhouse
Sub-Type	Townhouse
Style	2 Storey
Status	Active

Community Information

Address	103 5 Aberdeen Way
Area	Stony Plain
Subdivision	St. Andrews
City	Stony Plain
County	ALBERTA
Province	AB
Postal Code	T7Z 1N1

Amenities

Amenities	Deck, Parking-Visitor, See Remarks
Parking Spaces	2
Parking	2 Outdoor Stalls

Interior

Appliances	Dryer, Hood Fan, Refrigerator, Stove-Electric, Washer
Heating	Forced Air-1, Natural Gas
Stories	2
Has Basement	Yes
Basement	Full, Unfinished

Exterior

Exterior	Wood, Stucco, Vinyl
Exterior Features	Golf Nearby, No Back Lane, Playground Nearby, Schools, See Remarks, Partially Fenced
Roof	Asphalt Shingles
Construction	Wood, Stucco, Vinyl
Foundation	Concrete Perimeter

Additional Information

Date Listed	September 20th, 2025
Days on Market	3
Zoning	Zone 91

Condo Fee \$448

DATA IS DEEMED RELIABLE BUT IS NOT GUARANTEED ACCURATE BY THE REALTORS® ASSOCIATION OF EDMONTON. COPYRIGHT 2025 BY THE REALTORS® ASSOCIATION OF EDMONTON. ALL RIGHTS RESERVED.Trademarks are owned or controlled by the Canadian Real Estate Association (CREA) and identify real estate professionals who are members of CREA (REALTOR®, REALTORS®) and/or the quality of services they provide (MLS®, Multiple Listing Service®)

Listing information last updated on September 23rd, 2025 at 7:32pm MDT