

# \$0 - 16948 111 Avenue, Edmonton

MLS® #E4459164

**\$0**

0 Bedroom, 0.00 Bathroom,  
Retail on 0.00 Acres

West Sheffield Industrial, Edmonton, AB

Prime retail in West Edmonton! 4,488 Sq.Ft.  
High exposure retail. Frontage onto 170  
Street. Multiple entrances. High ceiling.  
Approval for rear overhead door. Business  
Employment (BE) zoning.

Built in 1997

## Essential Information

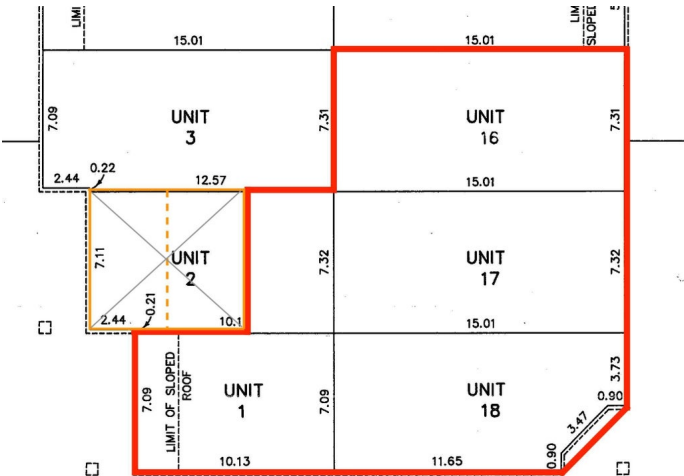
MLS® #	E4459164
Lease Rate	\$25
Bathrooms	0.00
Acres	0.00
Year Built	1997
Type	Retail
Status	Active

## Community Information

Address	16948 111 Avenue
Area	Edmonton
Subdivision	West Sheffield Industrial
City	Edmonton
County	ALBERTA
Province	AB
Postal Code	T5M 4C9

## Exterior

Exterior Concrete, Wood Frame, Mixed



Construction            Concrete, Wood Frame, Mixed

**Additional Information**

Date Listed            September 22nd, 2025

Days on Market        5

Zoning                 Zone 40

DATA IS DEEMED RELIABLE BUT IS NOT GUARANTEED ACCURATE BY THE REALTORS® ASSOCIATION OF EDMONTON. COPYRIGHT 2025 BY THE REALTORS® ASSOCIATION OF EDMONTON. ALL RIGHTS RESERVED.Trademarks are owned or controlled by the Canadian Real Estate Association (CREA) and identify real estate professionals who are members of CREA (REALTOR®, REALTORS®) and/or the quality of services they provide (MLS®, Multiple Listing Service®)

Listing information last updated on September 27th, 2025 at 3:32pm MDT